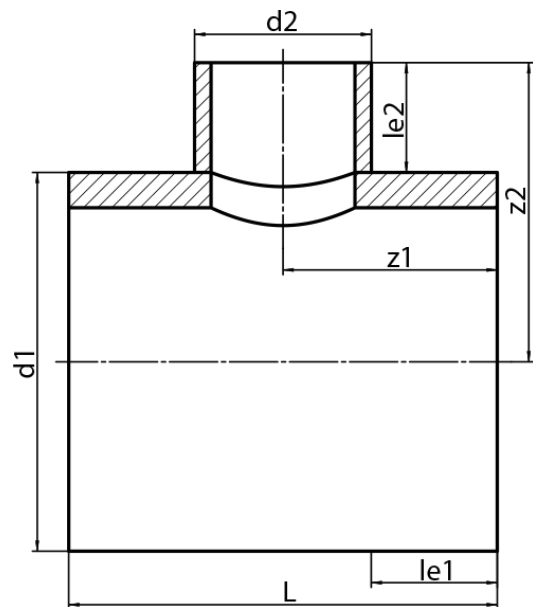


TEE, REDUCED (NON-REINFORCED SADDLE MOUNTED)



non-reinforced saddle mounted
pressure reduction factor 0,6
long spigot for butt- and electrofusion welding

PE100-RC



SDR 17



Art. No.	d1 [mm]	d2 [mm]	le1 [mm]	le2 [mm]	L [mm]	z1 [mm]	z2 [mm]	kg
32350281-R	500	280	350	250	980	490	500	44,30

Other materials, dimensions and pressure classes on request

For questions, please feel free to contact us at: Tel. + 49 281 98 414 - 0