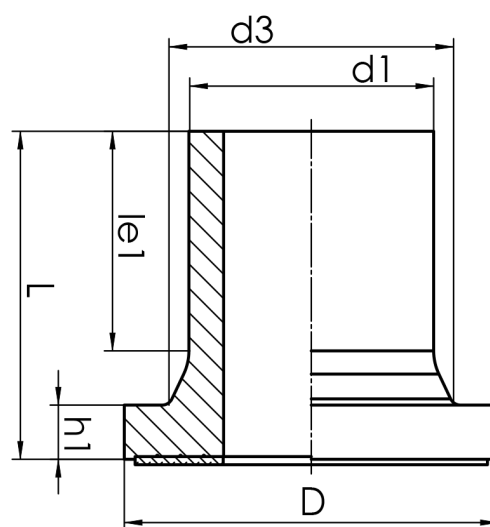


# STUB END



long spigot for butt- and electrofusion welding  
 limited pressure load according to DVS 2210-1 Supplement 3 Part 2.1  
 Design and dimensions according to ISO 9624 and DVS 2205 part 4

PE100



## SDR 9



Art. No.	d1 [mm]	d3 [mm]	D [mm]	le1 [mm]	L [mm]	h1 [mm]	kg
43002057-SDR9	50	61	88	66	94	13	0,15

Other materials and pressure classes on request  
 \* SDR 7.4 on all sides chamfered to SDR 9

For questions, please feel free to contact us at: Tel. + 49 281 98 414 - 0