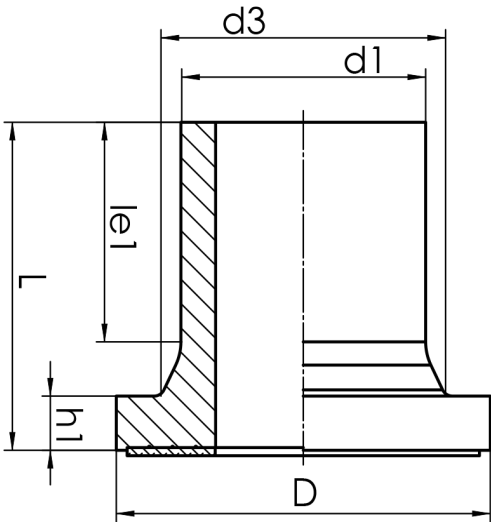


STUB END



long spigot for butt- and electrofusion welding  
limited pressure load according to DVS 2210-1 Supplement 3 Part 2.1  
Design and dimensions according to ISO 9624 and DVS 2205 part 4  
suitable for loose flange DN250 PN25 according to DIN EN 1092-1

PE100



SDR 9



Art. No.	d1 [mm]	d3 [mm]	D [mm]	le1 [mm]	L [mm]	h1 [mm]	kg
43002257-SDR9	250	285	320	123	203	40	4,92

Other materials and pressure classes on request  
\* SDR 7.4 on all sides chamfered to SDR 9

For questions, please feel free to contact us at: Tel. + 49 281 98 414 - 0