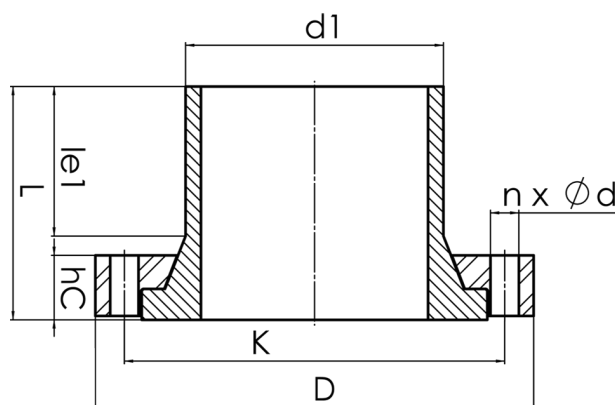


HD - FLANGE



full pressure class conform
plastic coated backing ring in chambered design for an optimal transmission of power
optional with steel hot-dip galvanized or stainless steel backing ring

PE100



SDR 11



Art. No.	DN [mm]	d1 [mm]	D [mm]	le1 [mm]	L [mm]	K [mm]	n	Ød [mm]	M	hc [mm]	kg
43004062	50	63	165	86	120	125	4	18	16	34	3,80

other pressure classes on request

For questions, please feel free to contact us at: Tel. + 49 281 98 414 - 0