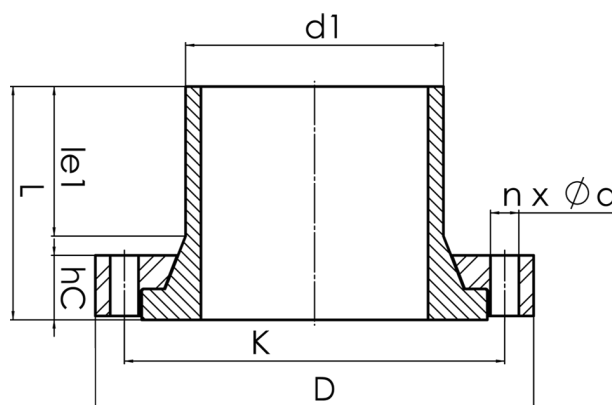


# HD - FLANGE



full pressure class conform  
plastic coated backing ring in chambered design for an optimal transmission of power  
optional with steel hot-dip galvanized or stainless steel backing ring

PE100



## SDR 11



Art. No.	DN [mm]	d1 [mm]	D [mm]	le1 [mm]	L [mm]	K [mm]	n	Ød [mm]	M	hc [mm]	kg
43004092	80	90	200	97	140	160	8	18	16	37	5,40

other pressure classes on request

For questions, please feel free to contact us at: Tel. + 49 281 98 414 - 0