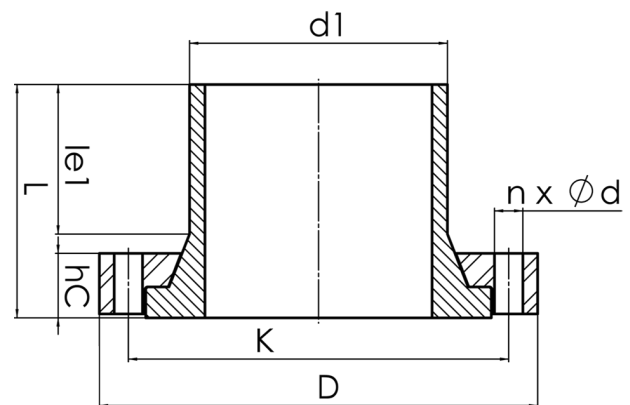


# HD - FLANGE



full pressure class conform  
 plastic coated backing ring in chambered design for an optimal transmission of power  
 optional with steel hot-dip galvanized or stainless steel backing ring

PE100



## SDR 17



| Art. No. | DN<br>[mm] | d1<br>[mm] | D<br>[mm] | le1<br>[mm] | L<br>[mm] | K<br>[mm] | n | Ød<br>[mm] | M  | hc<br>[mm] | kg   |
|----------|------------|------------|-----------|-------------|-----------|-----------|---|------------|----|------------|------|
| 43004111 | 100        | 110        | 220       | 112         | 153       | 180       | 8 | 18         | 16 | 40         | 6,80 |

other pressure classes on request

For questions, please feel free to contact us at: Tel. + 49 281 98  
 414 - 0