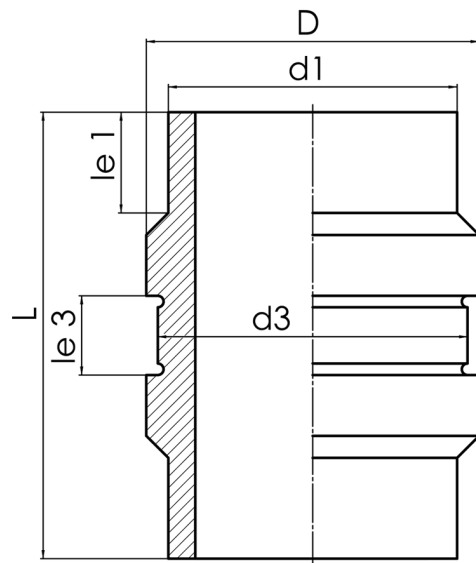


The clamp may not transfer radial force to the fixing point
suitable for the following clamp according to DIN 3567
Clamp dimensions: Nominal size = DN250 / Inner diameter = 273 mm / Width = 60 mm

PE100



SDR 11



| Art. No. | d1 [mm] | d3 [mm] | D [mm] | le1 [mm] | le3 [mm] | L [mm] | kg |
|----------|------------|------------|-----------|-------------|-------------|-----------|------|
| 46001252 | 250 | 270 | 286 | 70 | 65 | 320 | 6,90 |

For questions, please feel free to contact us at: Tel. + 49 281 98 414 - 0