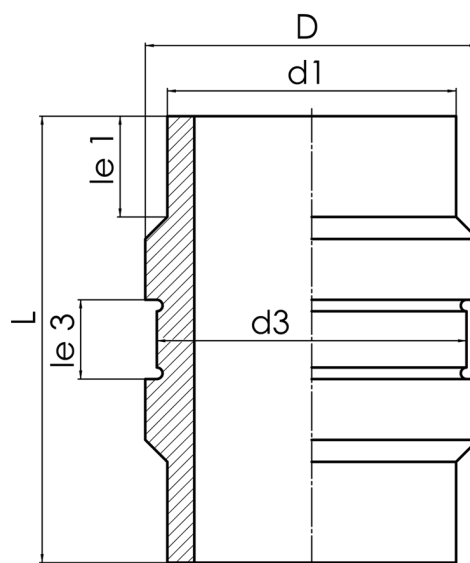


The clamp may not transfer radial force to the fixing point
suitable for the following clamp according to DIN 3567
Clamp dimensions: Nominal size = DN300 / Inner diameter = 318 mm / Width = 60 mm

PE100



SDR 11



Art. No.	d1 [mm]	d3 [mm]	D [mm]	le1 [mm]	le3 [mm]	L [mm]	kg
46001282	280	315	331	70	65	320	9,30

For questions, please feel free to contact us at: Tel. + 49 281 98 414 - 0