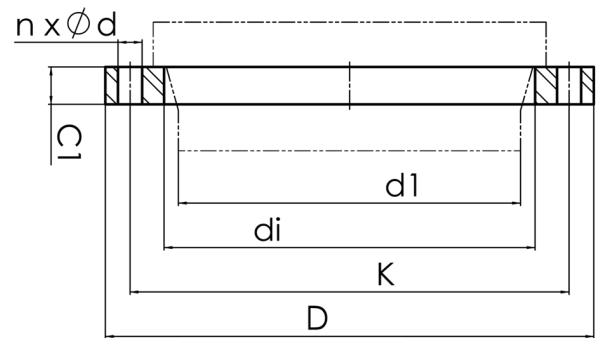
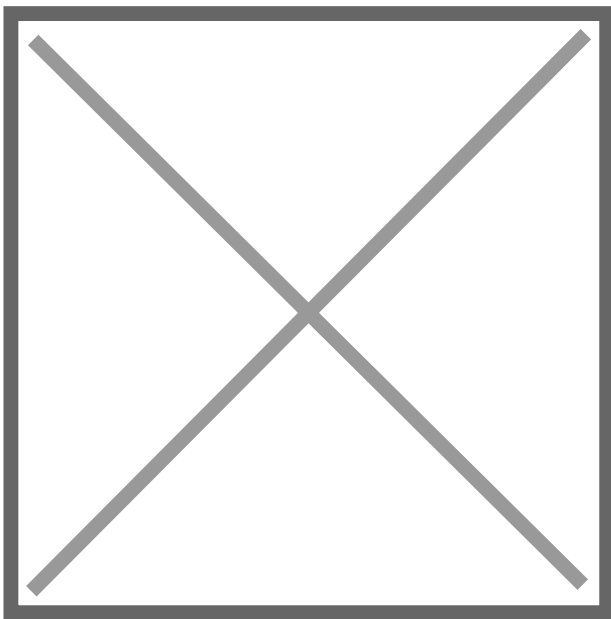


drilled according to DIN EN 1092-1 PN 16
material S355JR



Art. No.	DN [mm]	d1 [mm]	di [mm]	D [mm]	K [mm]	n	Ød [mm]	M	C1 [mm]	PFA [bar]	kg
4113260004500500	500	450	517	715	650	20	33	30	46	16	63,20

other dimensions and pressure classes on request
PFA = maximum allowable operating pressure (20°)

For questions, please feel free to contact us at: Tel. + 49 281 98
414 - 0