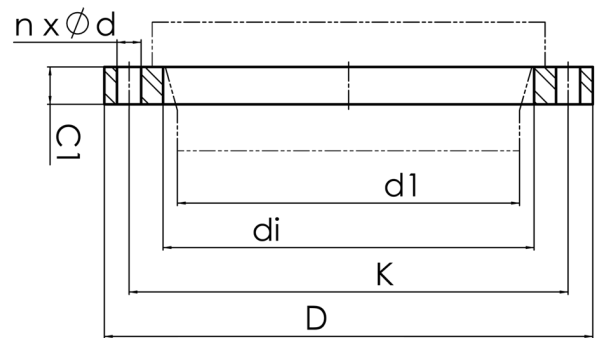


drilled according to DIN EN 1092-1 PN 16  
material S355JR



Art. No.	DN [mm]	d1 [mm]	di [mm]	D [mm]	K [mm]	n	ød [mm]	C1 [mm]	PFA [bar]	kg
4113260018001800	1800	1800	1875	2130	2020	44	56	105	16	567,2

other dimensions and pressure classes on request  
PFA = maximum allowable operating pressure (20°)

For questions, please feel free to contact us at: Tel. + 49 281 98  
414 - 0