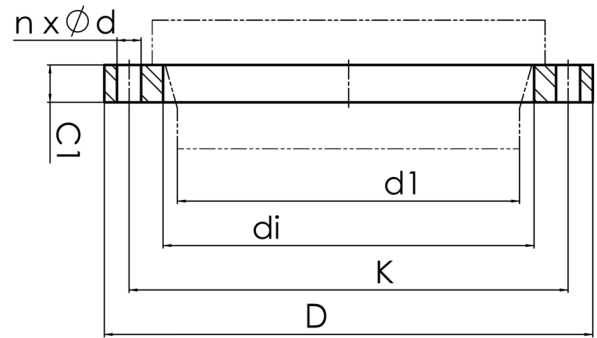


# LOOSE FLANGE PP STEEL



drilled according to DIN EN 1092-1  
PP glass fiber reinforced with steel inlay



| Art. No.         | DN<br>[mm] | d1<br>[mm] | di<br>[mm] | D<br>[mm] | K<br>[mm] | n | Ød<br>[mm] | M  | C1<br>[mm] | PFA<br>[bar] | kg  |
|------------------|------------|------------|------------|-----------|-----------|---|------------|----|------------|--------------|-----|
| 4113300002250200 | 200        | 225        | 238        | 342       | 295       | 8 | 22         | 20 | 24         | 10           | 4,4 |

other dimensions and pressure classes on request  
PFA = maximum allowable operating pressure (20°)  
Note: Use washers when screwing

For questions, please feel free to contact us at: Tel. + 49 281 98 414 - 0