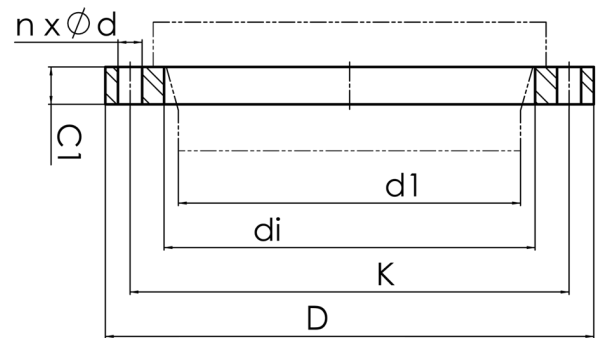


drilled according to DIN EN 1092-1 PN 10



Art. No.	DN [mm]	d1 [mm]	di [mm]	D [mm]	K [mm]	n	Ød [mm]	M	C1 [mm]	PFA [bar]	kg
4113320008000800	800	800	843	1015	950	24	33	30	56	10	101,6

other dimensions and pressure classes on request
 PFA = maximum allowable operating pressure (20°)

For questions, please feel free to contact us at: Tel. + 49 281 98
 414 - 0