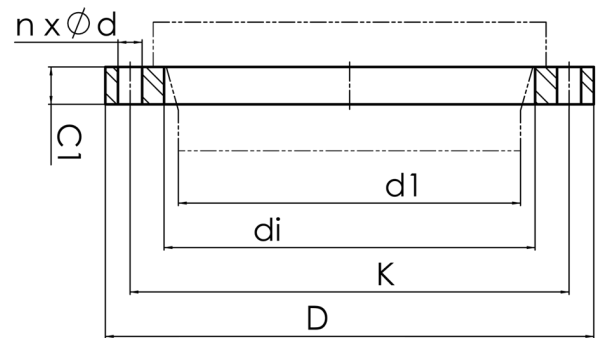


drilled according to DIN EN 1092-1 PN 10



Art. No.	DN [mm]	d1 [mm]	di [mm]	D [mm]	K [mm]	n	Ød [mm]	M	C1 [mm]	PFA [bar]	kg
4113320010001000	1000	1000	1050	1230	1160	28	36	33	70	10	161,9

other dimensions and pressure classes on request
 PFA = maximum allowable operating pressure (20°)

For questions, please feel free to contact us at: Tel. + 49 281
 98 414 - 0