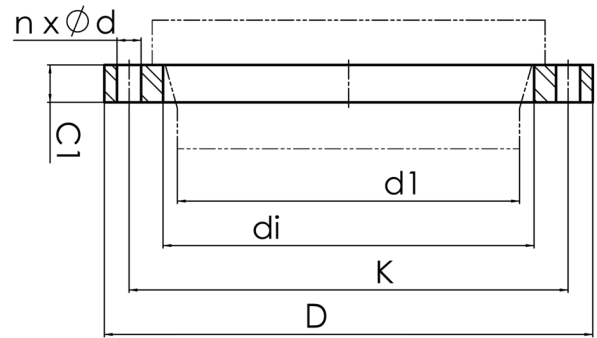


drilled according to DIN EN 1092-1
PP glass fiber reinforced with steel inlay



| Art. No. | DN [mm] | d1 [mm] | di [mm] | D [mm] | K [mm] | n | Ød [mm] | M | C1 [mm] | PFA [bar] | kg |
|------------------|------------|------------|------------|-----------|-----------|----|------------|----|------------|--------------|------|
| 4113400003550350 | 350 | 355 | 376 | 530 | 470 | 16 | 26 | 24 | 42 | 16 | 16,7 |

other dimensions and pressure classes on request
PFA = maximum allowable operating pressure (20°)
Note: Use washers when screwing

For questions, please feel free to contact us at: Tel. + 49 281 98
414 - 0