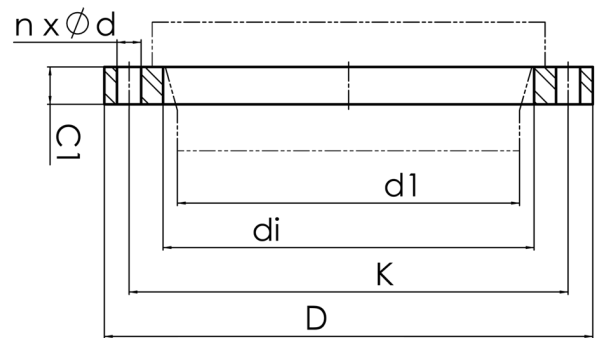


drilled according to DIN EN 1092-1 PN 16
material S355JR



| Art. No. | DN [mm] | d1 [mm] | di [mm] | D [mm] | K [mm] | n | Ød [mm] | M | C1 [mm] | PFA [bar] | kg |
|------------------|------------|------------|------------|-----------|-----------|----|------------|----|------------|--------------|------|
| 4113420007100700 | 700 | 710 | 740 | 910 | 840 | 24 | 36 | 33 | 63 | 16 | 97,1 |

other dimensions and pressure classes on request
PFA = maximum allowable operating pressure (20°)

For questions, please feel free to contact us at: Tel. + 49 281 98
414 - 0