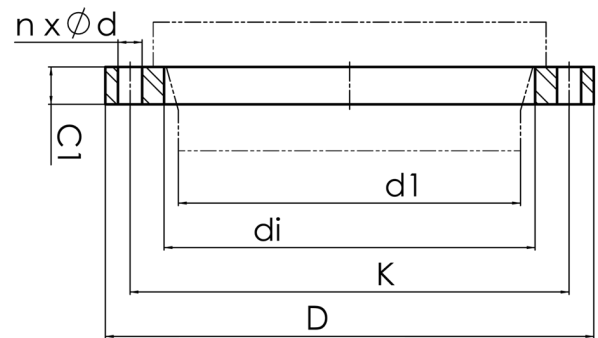
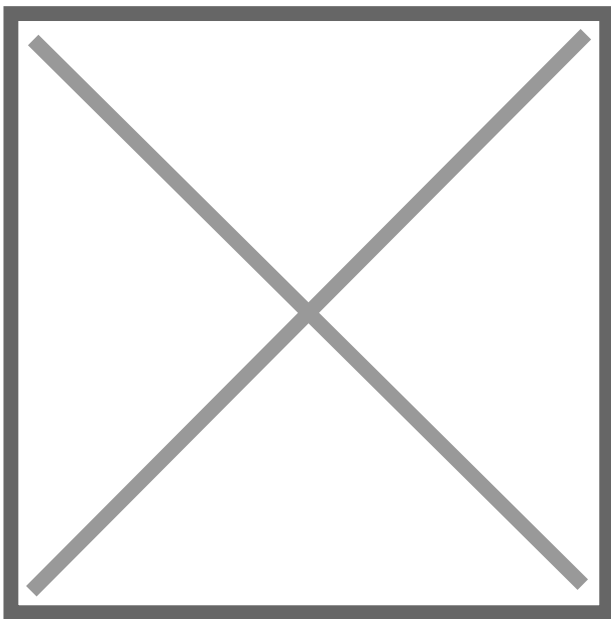


drilled according to DIN EN 1092-1 PN 16
material S355JR



| Art. No. | DN [mm] | d1 [mm] | di [mm] | D [mm] | K [mm] | n | Ød [mm] | M | C1 [mm] | PFA [bar] | kg |
|------------------|------------|------------|------------|-----------|-----------|----|------------|----|------------|--------------|-------|
| 4113420009000900 | 900 | 900 | 947 | 1125 | 1050 | 28 | 39 | 36 | 82 | 16 | 165,3 |

other dimensions and pressure classes on request
PFA = maximum allowable operating pressure (20°)

For questions, please feel free to contact us at: Tel. + 49 281
98 414 - 0