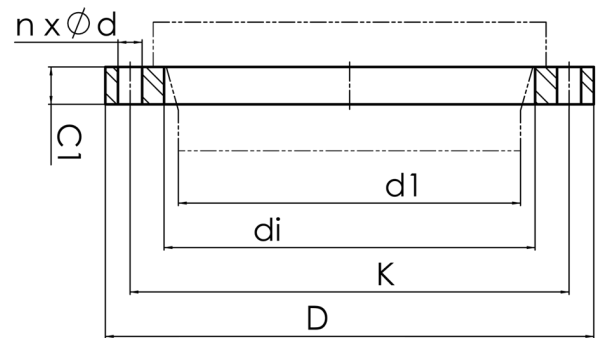


drilled according to DIN EN 1092-1 PN 16
material S355JR



Art. No.	DN [mm]	d1 [mm]	di [mm]	D [mm]	K [mm]	n	ød [mm]	M	C1 [mm]	PFA [bar]	kg
4113420010001000	1000	1000	1050	1255	1170	28	42	39	90	16	235,4

other dimensions and pressure classes on request
PFA = maximum allowable operating pressure (20°)

For questions, please feel free to contact us at: Tel. + 49 281
98 414 - 0