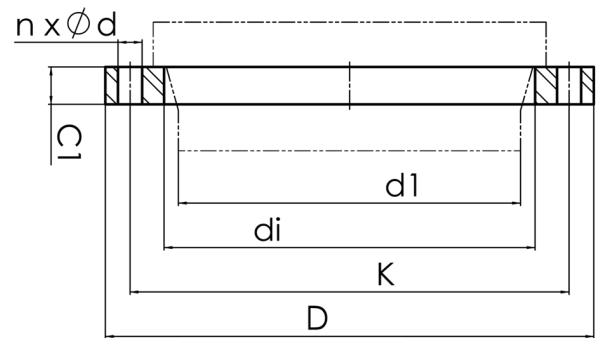
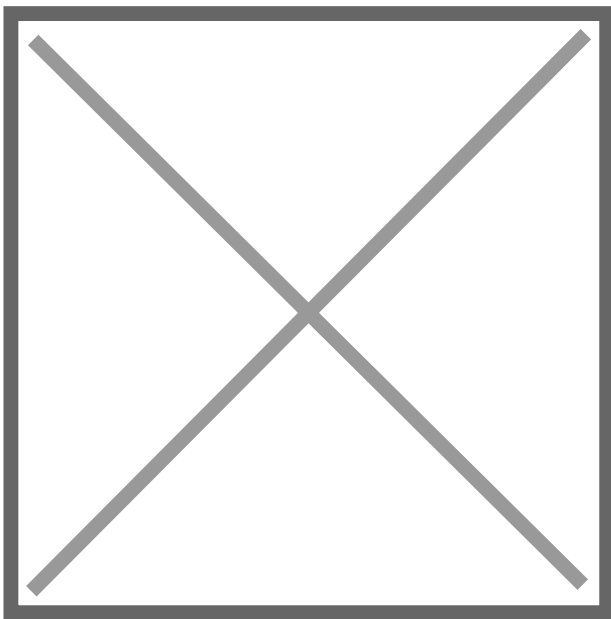


drilled according to DIN EN 1092-1 PN 16  
material S355JR



Art. No.	DN [mm]	d1 [mm]	di [mm]	D [mm]	K [mm]	n	Ød [mm]	C1 [mm]	PFA [bar]	kg
4113420012001200	1200	1200	1255	1485	1390	32	48	80	16	272,24

other dimensions and pressure classes on request  
PFA = maximum allowable operating pressure (20°)

For questions, please feel free to contact us at: Tel. + 49 281 98  
414 - 0