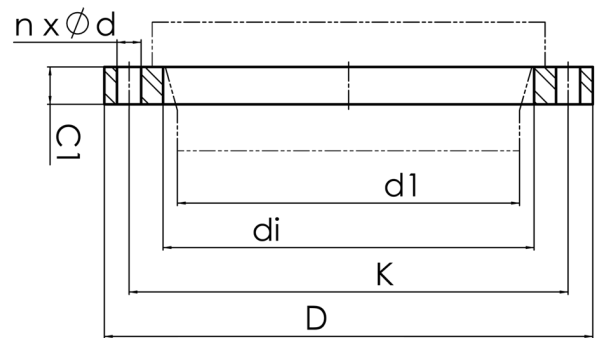


drilled according to DIN EN 1092-1 PN25 und ISO 9624
 Material: 1.0038 (S235JRG2)



Art. No.	DN [mm]	d1 [mm]	di [mm]	D [mm]	K [mm]	n	Ød [mm]	M	C1 [mm]	PFA [bar]	kg
4113520002500250	250	250	288	425	370	12	30	27	35	25	18,6

other dimensions and pressure classes on request
 PFA = maximum allowable operating pressure (20°)

For questions, please feel free to contact us at: Tel. + 49 281 98
 414 - 0