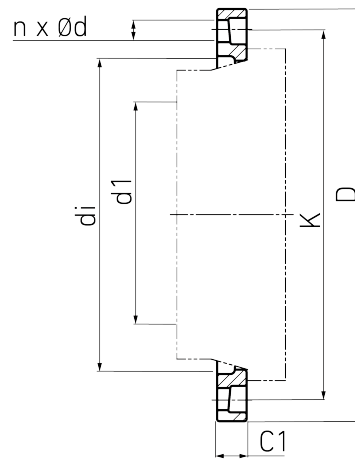
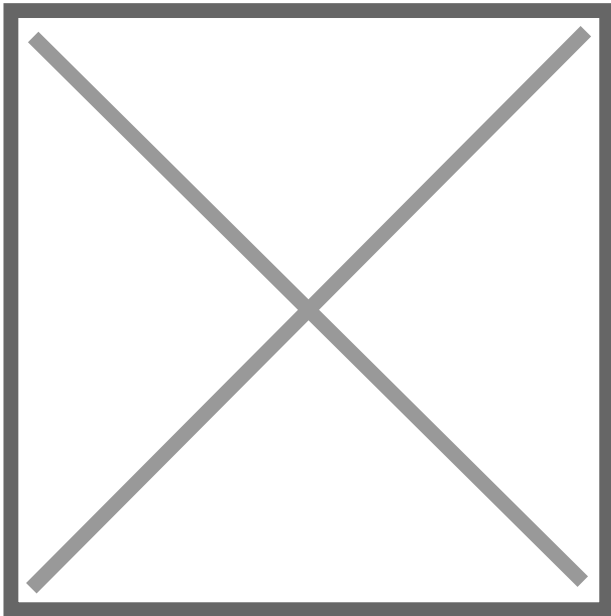


# PROFILED LOOSE FLANGE



GGG with epoxy coating  
drilled according to DIN EN 1092-1 PN 10

GGG/Epoxidbeschichtung



Art. No.	DN [mm]	d1 [mm]	di [mm]	D [mm]	K [mm]	n	ød [mm]	M	C1 [mm]	PFA [bar]	kg
4113810002800250	250	280	294	395	350	12	22	20	22	10	5,1

galvanized on request

For questions, please feel free to contact us at: Tel. + 49 281 98  
414 - 0