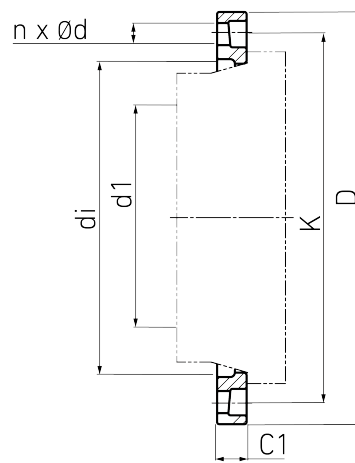


# PROFILED LOOSE FLANGE



GGG with epoxy coating  
drilled according to DIN EN 1092-1 PN 16

GGG/Epoxidbeschichtung



Art. No.	DN [mm]	d1 [mm]	di [mm]	D [mm]	K [mm]	n	ød [mm]	M	C1 [mm]	PFA [bar]	kg
4113820003150300	300	315	338	460	410	12	26	24	34	16	8,6

galvanized on request

For questions, please feel free to contact us at: Tel. + 49 281 98  
414 - 0