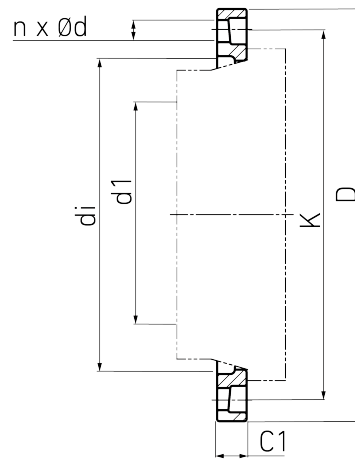
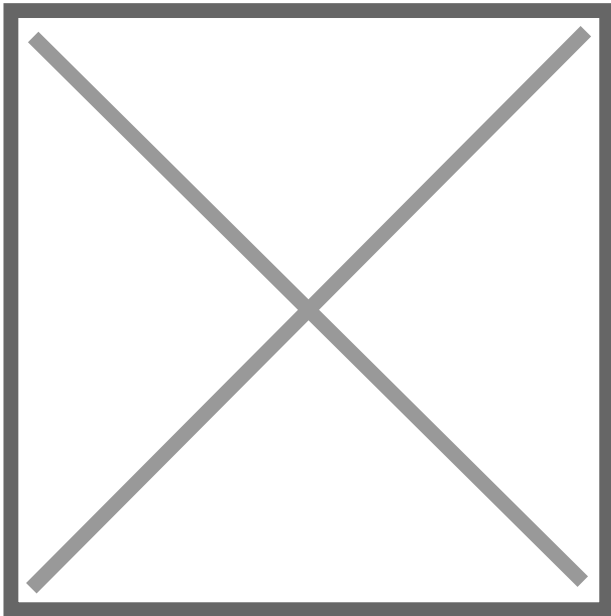


PROFILED LOOSE FLANGE



GGG with PP encapsulated
highly corrosion resistant
drilled according to DIN EN 1092-1 PN 10

GGG mit PP-Ummantelung



Art. No.	DN [mm]	d1 [mm]	di [mm]	D [mm]	K [mm]	n	ød [mm]	M	C1 [mm]	PFA [bar]	kg
4114410002500250	250	250	288	412	350	12	22	20	36	10	4,9

galvanized on request
Note: Use washers when screwing

For questions, please feel free to contact us at: Tel. + 49 281 98
414 - 0