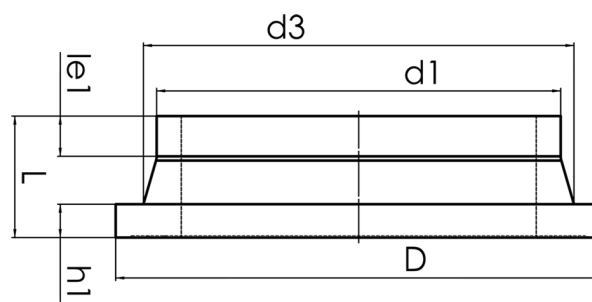


STUB END



short spigot for butt welding
 limited pressure load according to DVS 2210-1 Supplement 3 Part 2.1

PP



SDR 11

| Art. No. | d1 [mm] | d3 [mm] | D [mm] | le1 [mm] | L [mm] | h1 [mm] | kg |
|------------------|------------|------------|-----------|-------------|-----------|------------|------|
| 4230021101400000 | 140 | 155 | 188 | 27 | 80 | 25 | 0,74 |

Other materials and pressure classes on request

For questions, please feel free to contact us at: Tel. + 49 281 98 414 - 0