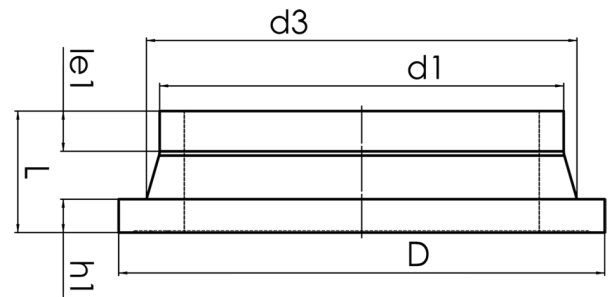


STUB END



short spigot for butt welding
 limited pressure load according to DVS 2210-1 Supplement 3 Part 2.1

PP



SDR 11

| Art. No. | d1 [mm] | d3 [mm] | D [mm] | le1 [mm] | L [mm] | h1 [mm] | kg |
|------------------|------------|------------|-----------|-------------|-----------|------------|-----|
| 4230021102800000 | 280 | 291 | 320 | 45 | 100 | 35 | 2,7 |

Other materials and pressure classes on request

For questions, please feel free to contact us at: Tel. + 49 281 98 414 - 0