

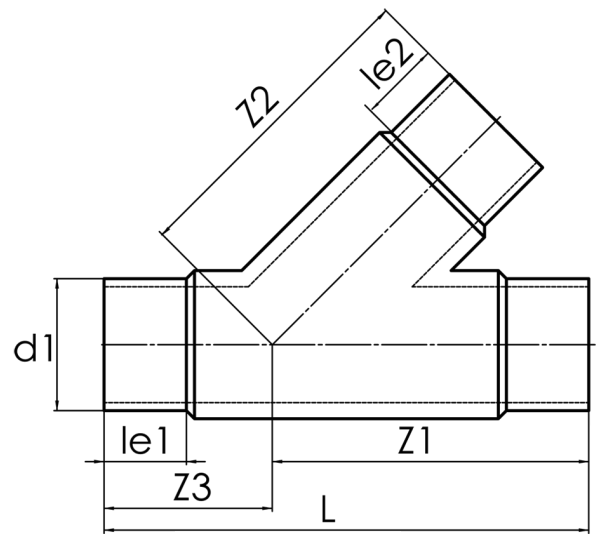
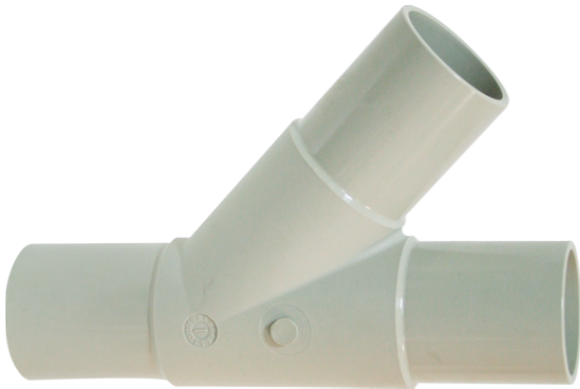
TECHNICAL DATA SHEET  
**BRANCH EQUAL**



45??

long spigot for butt- and electrofusion welding

PP



**SDR 17,6**



Art. No.	d1 [mm]	d2 [mm]	le1 [mm]	le2 [mm]	L [mm]	z1 [mm]	z2 [mm]	z3 [mm]	kg
4242811802250225	225	225	130	130	940	595	595	345	18,60

other dimensions and pressure classes on request

For questions, please feel free to contact us at: Tel. + 49 281 98 414 - 0