

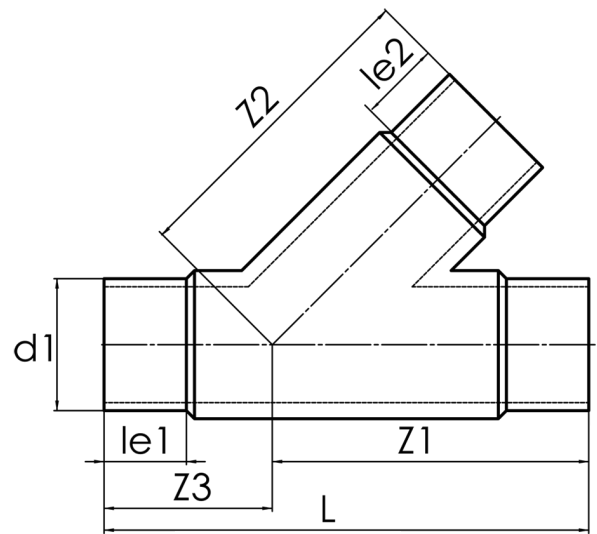
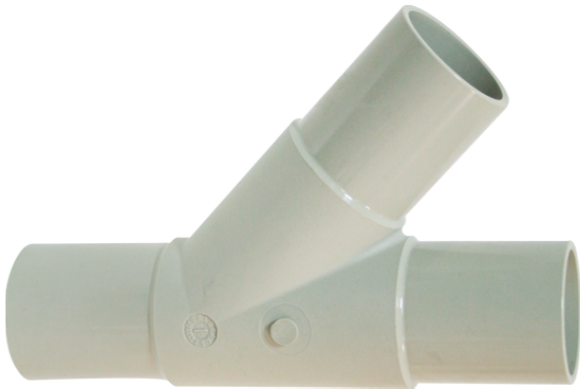
TECHNICAL DATA SHEET  
**BRANCH EQUAL**



45??

long spigot for butt- and electrofusion welding

PP



**SDR 17,6**



Art. No.	$d_1$ [mm]	$d_2$ [mm]	$le_1$ [mm]	$le_2$ [mm]	$L$ [mm]	$z_1$ [mm]	$z_2$ [mm]	$z_3$ [mm]	kg
4242811804000400	400	400	179	179	1445	948	948	498	95,6

other dimensions and pressure classes on request

For questions, please feel free to contact us at: Tel. + 49 281 98 414 - 0