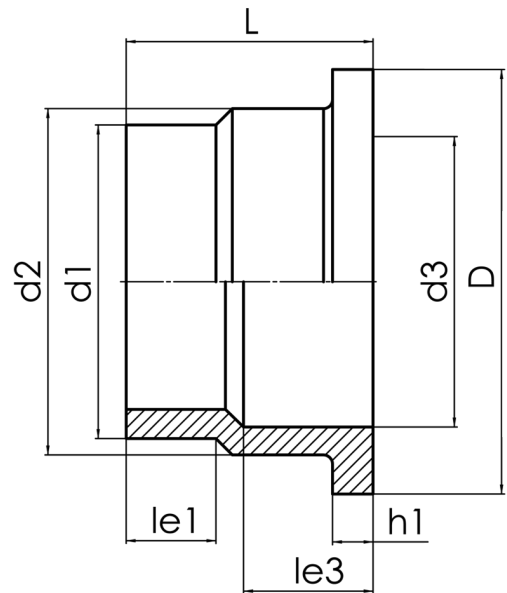


OUTLET FLANGE ADAPTOR



to be used with loose flange for outlet flange adaptor

PE100-RC



SDR 11



| Art. No. | d1 [mm] | d2 [mm] | d3 [mm] | D [mm] | le1 [mm] | le3 [mm] | L [mm] | h1 [mm] | PFA [bar] | kg |
|------------------|------------|------------|------------|-----------|-------------|-------------|-----------|------------|--------------|-----|
| 4320201100500000 | 50 | 61 | 45 | 90 | 30 | 32 | 67 | 12 | 16 | 0,1 |

PFA = maximum allowable operating pressure (20??)

For questions, please feel free to contact us at: Tel. + 49 281 98 414 - 0