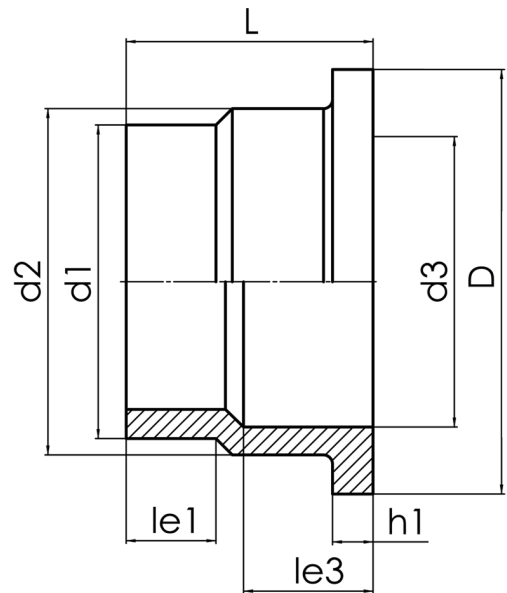


# OUTLET FLANGE ADAPTOR



to be used with loose flange for outlet flange adaptor

PE100-RC



## SDR 11



Art. No.	d1 [mm]	d2 [mm]	d3 [mm]	D [mm]	le1 [mm]	le3 [mm]	L [mm]	h1 [mm]	PFA [bar]	kg
4320201103150000	315	346	308	375	66	174	272	35	10	6,40

PFA = maximum allowable operating pressure (20??)

For questions, please feel free to contact us at: Tel. + 49 281 98 414  
- 0