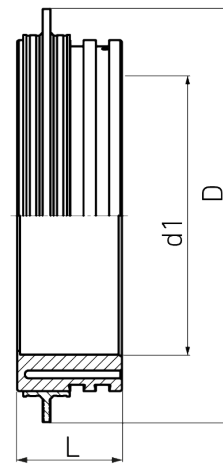


# ELECTROFUSION CONCRETE SHAFT ADAPTER



for permanently sealed manhole connections  
 with integrated heating coils  
 4,0 mm pin  
 with angle movement  $\pm 3^\circ$  and pipe stop

PE100-RC



Art. No.	d1 [mm]	D [mm]	L [mm]	PFA [bar]	kg
4335500003550000	355	531	135	0,5	6,88

Other lengths on request  
 Without angle compensation on request  
 Without pipe stop on request

For questions, please feel free to contact us at: Tel. + 49 281 98 414 - 0