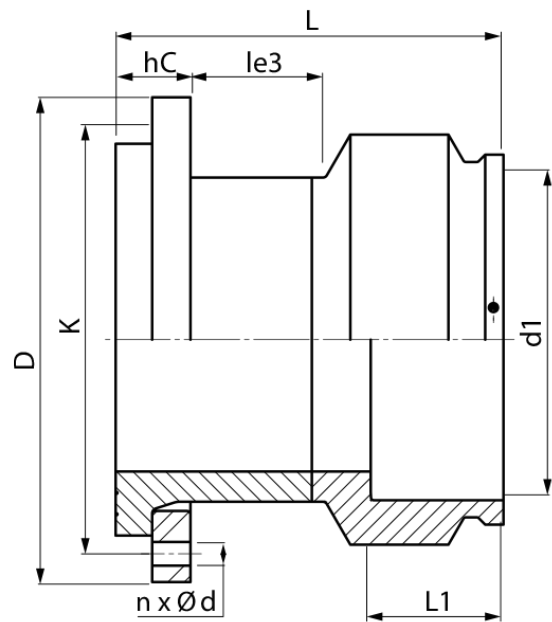


drilled according to DIN EN 1092-1 PN 16  
4,0 mm pin

PE100-RC



**SDR 11**



Art. No.	DN [mm]	d1 [mm]	D [mm]	le3 [mm]	L [mm]	L1 [mm]	K [mm]	n	Ød [mm]	hC [mm]	kg
4336211103150300	300	315	463	153	390	125	410	12	26	67	35,98

Other materials, dimensions and pressure classes on request

For questions, please feel free to contact us at: Tel. + 49 281  
98 414 - 0