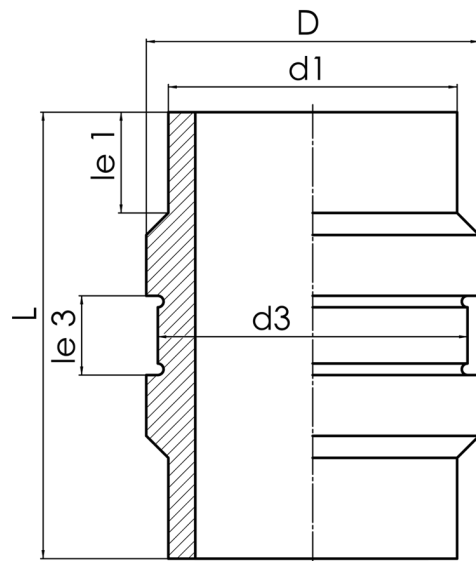


The clamp may not transfer radial force to the fixing point  
suitable for the following clamp according to DIN 3567  
Clamp dimensions: Nominal size = DN350 / Inner diameter = 368 mm / Width = 60 mm

PE100-RC



**SDR 11**



Art. No.	d1 [mm]	d3 [mm]	D [mm]	le1 [mm]	le3 [mm]	L [mm]	kg
4346001103550000	355	365	381	75	65	330	12,2

For questions, please feel free to contact us at: Tel. + 49 281 98 414 - 0