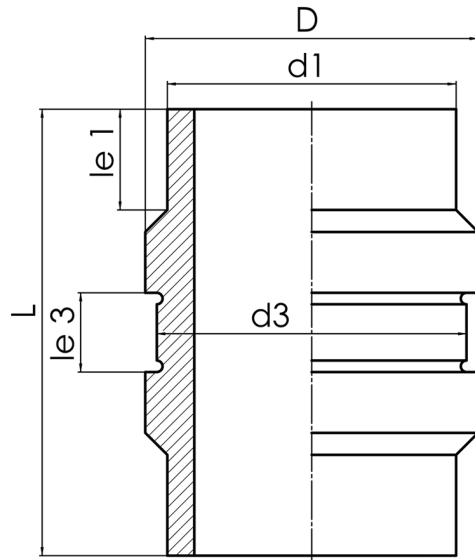


The clamp may not transfer radial force to the fixing point  
suitable for special clamp  
Clamp dimensions: Inner diameter = 658 mm / Width = 90 mm

PE100-RC



**SDR 11**



Art. No.	d1 [mm]	d3 [mm]	D [mm]	le1 [mm]	le3 [mm]	L [mm]	kg
4346001106300000	630	658	678	75	95	360	42,7

For questions, please feel free to contact us at: Tel. + 49 281 98 414 - 0