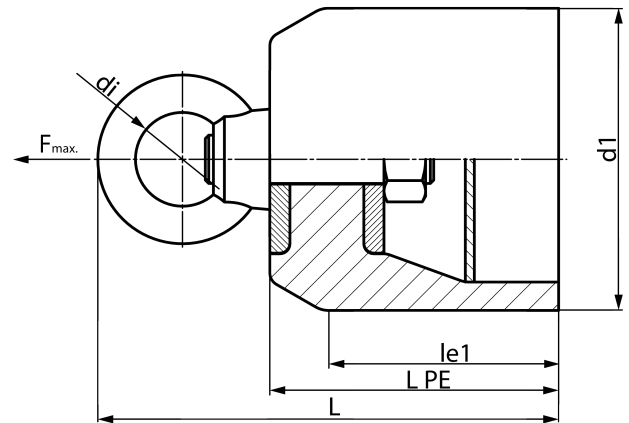


closed version

PE100-RC



SDR 11

| Art. No. | d1 [mm] | l _{e1} [mm] | l _{e1} * [mm] | L [mm] | kg |
|------------------|------------|-------------------------|---------------------------|-----------|------|
| 4361061101600000 | 160 | 125 | 150 | 259 | 5,03 |

The towing rope has to be attached to the pull head using a rotating shackle
 Special versions, e.g. for swagelining procedure on request
 other pulling forces on request

For questions, please feel free to contact us at: Tel. + 49 281 98 414 - 0