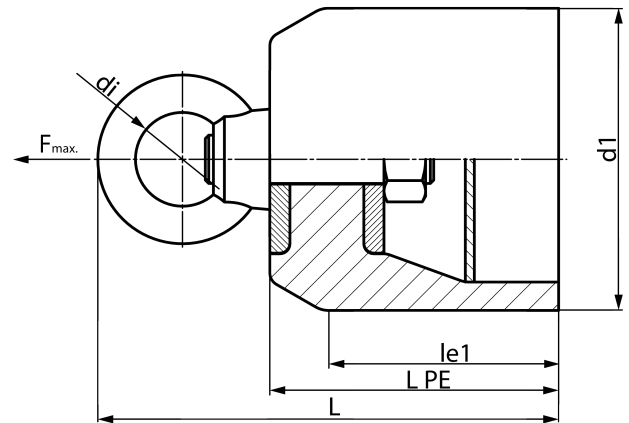


closed version

PE100-RC



**SDR 17**

| Art. No.         | d1<br>[mm] | le1<br>[mm] | le1*<br>[mm] | L<br>[mm] | kg    |
|------------------|------------|-------------|--------------|-----------|-------|
| 4361061702250000 | 225        | 180         | 150          | 343       | 11,53 |

The towing rope has to be attached to the pull head using a rotating shackle  
 Special versions, e.g. for swagelining procedure on request  
 other pulling forces on request

For questions, please feel free to contact us at: Tel. + 49 281 98 414 - 0