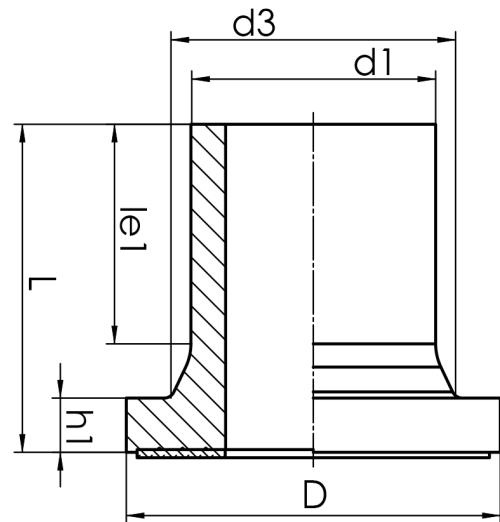


STUB END



long spigot for butt- and electrofusion welding
 limited pressure load according to DVS 2210-1 Supplement 3 Part 2.1
 Design and dimensions according to ISO 9624 and DVS 2205 part 4

PE100



SDR 9



Art. No.	d1 [mm]	d3 [mm]	D [mm]	le1 [mm]	L [mm]	h1 [mm]	kg
4430040900900000	90	105	138	81	121	20	0,6

* SRD 7,4 chamfered to SDR 9 (7.1 - 8.0 mm)
 supplied in a SET with an NBR gasket

For questions, please feel free to contact us at: Tel. + 49 281 98 414 - 0