

BLANKING FLANGE SET



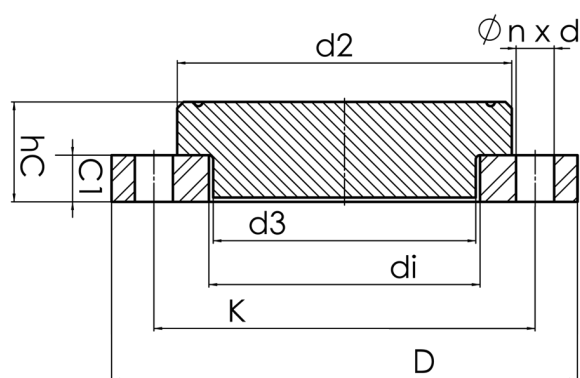
drilled according to DIN EN 1092-1 PN 10

Set composed of:

loose flange PP glass fiber reinforced with steel inlay with PP-R end blank

optional with threaded connection

PP



| Art. No. | DN [mm] | d1 [mm] | d2 [mm] | d3 [mm] | D [mm] | K [mm] | n | ød [mm] | C1 [mm] | hc [mm] | kg |
|-------------|------------|------------|------------|------------|-----------|-----------|----|------------|------------|------------|-------|
| 13106351-PP | 350 | 355 | 430 | 372 | 520 | 460 | 16 | 22 | 39 | 89 | 22,90 |

other dimensions and pressure classes on request

PFA = maximum allowable operating pressure (20°)

For questions, please feel free to contact us at: Tel. + 49 281

98 414 - 0