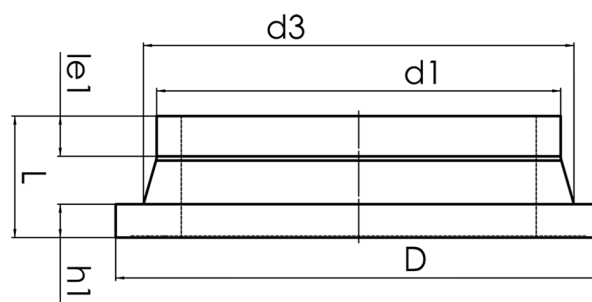


STUB END



short spigot for butt welding
limited pressure load according to DVS 2210-1 Supplement 3 Part 2.1

PP



SDR 17,6

| Art. No. | d1 [mm] | d3 [mm] | D [mm] | le1 [mm] | L [mm] | h1 [mm] | kg |
|----------|------------|------------|-----------|-------------|-----------|------------|------|
| 23001166 | 160 | 175 | 212 | 34 | 80 | 18 | 0,70 |

Other materials and pressure classes on request

For questions, please feel free to contact us at: Tel. + 49 281 98 414 - 0