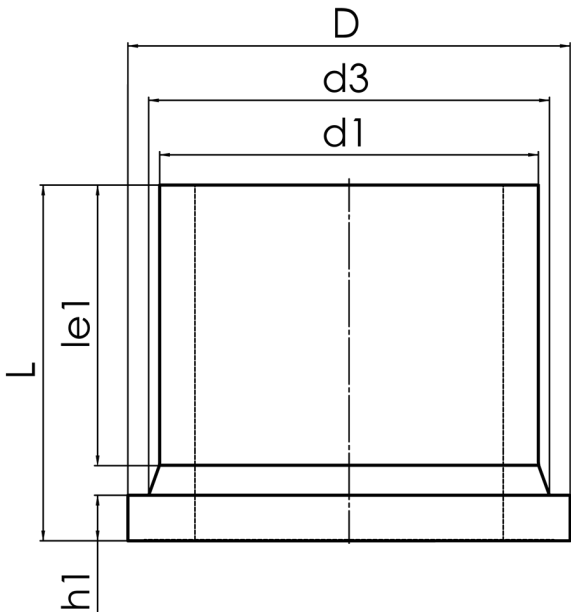


STUB END



long spigot for butt- and electrofusion welding  
pressure load according to DVS 2210-1 Supplement 3 Part 2.1

PP



SDR 11

| Art. No. | d1<br>[mm] | d3<br>[mm] | D<br>[mm] | le1<br>[mm] | L<br>[mm] | h1<br>[mm] | kg   |
|----------|------------|------------|-----------|-------------|-----------|------------|------|
| 23002311 | 315        | 335        | 370       | 154         | 390       | 35         | 7,20 |

Other materials and pressure classes on request

For questions, please feel free to contact us at: Tel. + 49 281 98 414 - 0