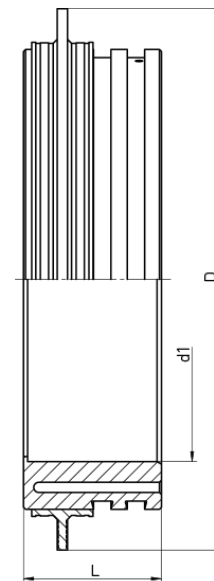


# ELECTROFUSION CONCRETE SHAFT ADAPTER



for permanently sealed manhole connections  
with integrated heating coils  
4,0 mm pin  
with angle movement  $\pm 3^\circ$  and pipe stop

PE100-RC



| Art. No.    | d1<br>[mm] | D<br>[mm] | L<br>[mm] | PFA<br>[bar] | kg    |
|-------------|------------|-----------|-----------|--------------|-------|
| 36013710-EF | 710        | 977       | 135       | 0,5          | 25,63 |

Other lengths on request  
Without angle compensation on request  
Without pipe stop on request

For questions, please feel free to contact us at: Tel. + 49 281 98 414 - 0