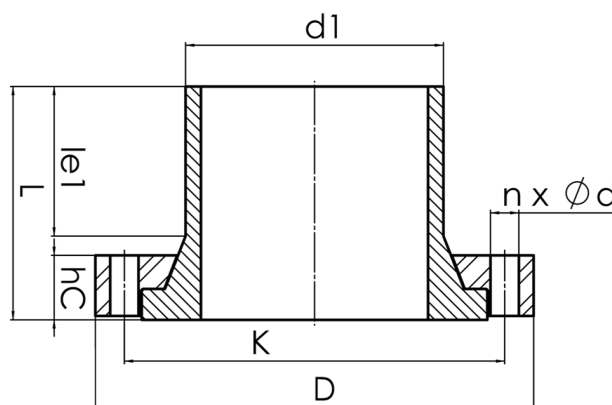


HD - FLANGE



full pressure class conform
plastic coated backing ring in chambered design for an optimal transmission of power
optional with steel hot-dip galvanized or stainless steel backing ring

PE100



SDR 17



| Art. No. | DN [mm] | d1 [mm] | D [mm] | le1 [mm] | L [mm] | K [mm] | n | Ød [mm] | M | hc [mm] | kg |
|----------|------------|------------|-----------|-------------|-----------|-----------|---|------------|----|------------|------|
| 43004091 | 80 | 90 | 200 | 97 | 140 | 160 | 8 | 18 | 16 | 37 | 5,30 |

other pressure classes on request

For questions, please feel free to contact us at: Tel. + 49 281 98
414 - 0