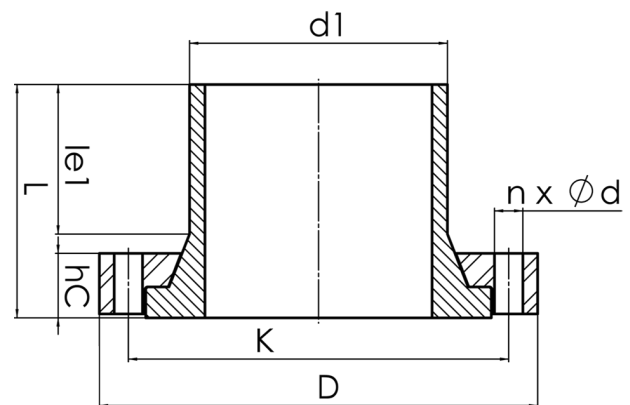


HD - FLANGE



full pressure class conform
plastic coated backing ring in chambered design for an optimal transmission of power
optional with steel hot-dip galvanized or stainless steel backing ring

PE100



SDR 11



Art. No.	DN [mm]	d1 [mm]	D [mm]	le1 [mm]	L [mm]	K [mm]	n	Ød [mm]	M	hc [mm]	kg
43004142	125	140	250	108	156	210	8	18	16	47	8,50

other pressure classes on request

For questions, please feel free to contact us at: Tel. + 49 281 98
414 - 0