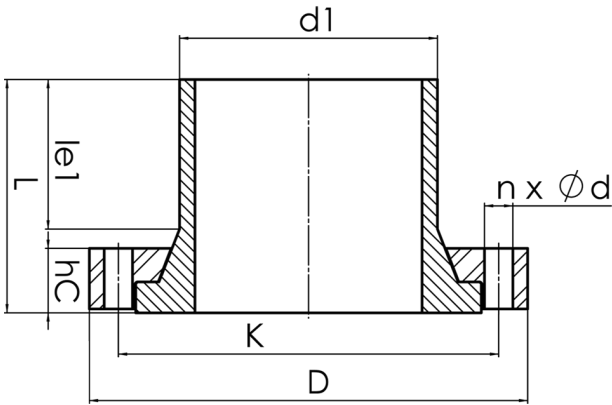


HD - FLANGE



full pressure class conform  
plastic coated backing ring in chambered design for an optimal transmission of power  
optional with steel hot-dip galvanized or stainless steel backing ring

PE100



SDR 11



| Art. No. | DN<br>[mm] | d1<br>[mm] | D<br>[mm] | le1<br>[mm] | L<br>[mm] | K<br>[mm] | n  | Ød<br>[mm] | M  | hc<br>[mm] | kg    |
|----------|------------|------------|-----------|-------------|-----------|-----------|----|------------|----|------------|-------|
| 43004402 | 400        | 400        | 565       | 179         | 257       | 515       | 16 | 26         | 24 | 84         | 58,70 |

other pressure classes on request

For questions, please feel free to contact us at: Tel. + 49 281 98 414 - 0