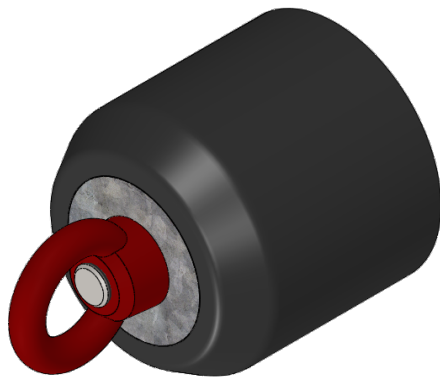


closed version

PE100



SDR 17

| Art. No. | d1 [mm] | le1 [mm] | L [mm] | kg |
|----------|------------|-------------|-----------|------|
| 46106121 | 125 | 105 | 239 | 3,72 |

The towing rope has to be attached to the pull head using a rotating shackle
 Special versions, e.g. for swagelining procedure on request
 other pulling forces on request

For questions, please feel free to contact us at: Tel. + 49 281 98 414 - 0