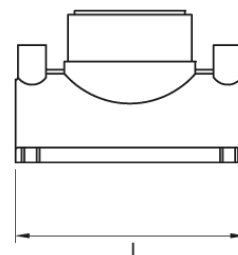
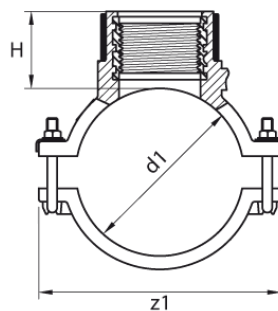


TRANSITION SADDLE FOR CONNECTION OF IRRIGATION SYSTEMS

outlet with female thread
4 mm Pin
Pressure ratings: Water 16 bar / Gas 10 bar

PE100



Art. No.	d1 [mm]	Rp [mm]	L [mm]	z1 [mm]	H [mm]	VE	kg
47611142	110	1 1/4"	166	180	56	2	2,44

For questions, please feel free to contact us at: Tel. + 49 281 98 414 - 0