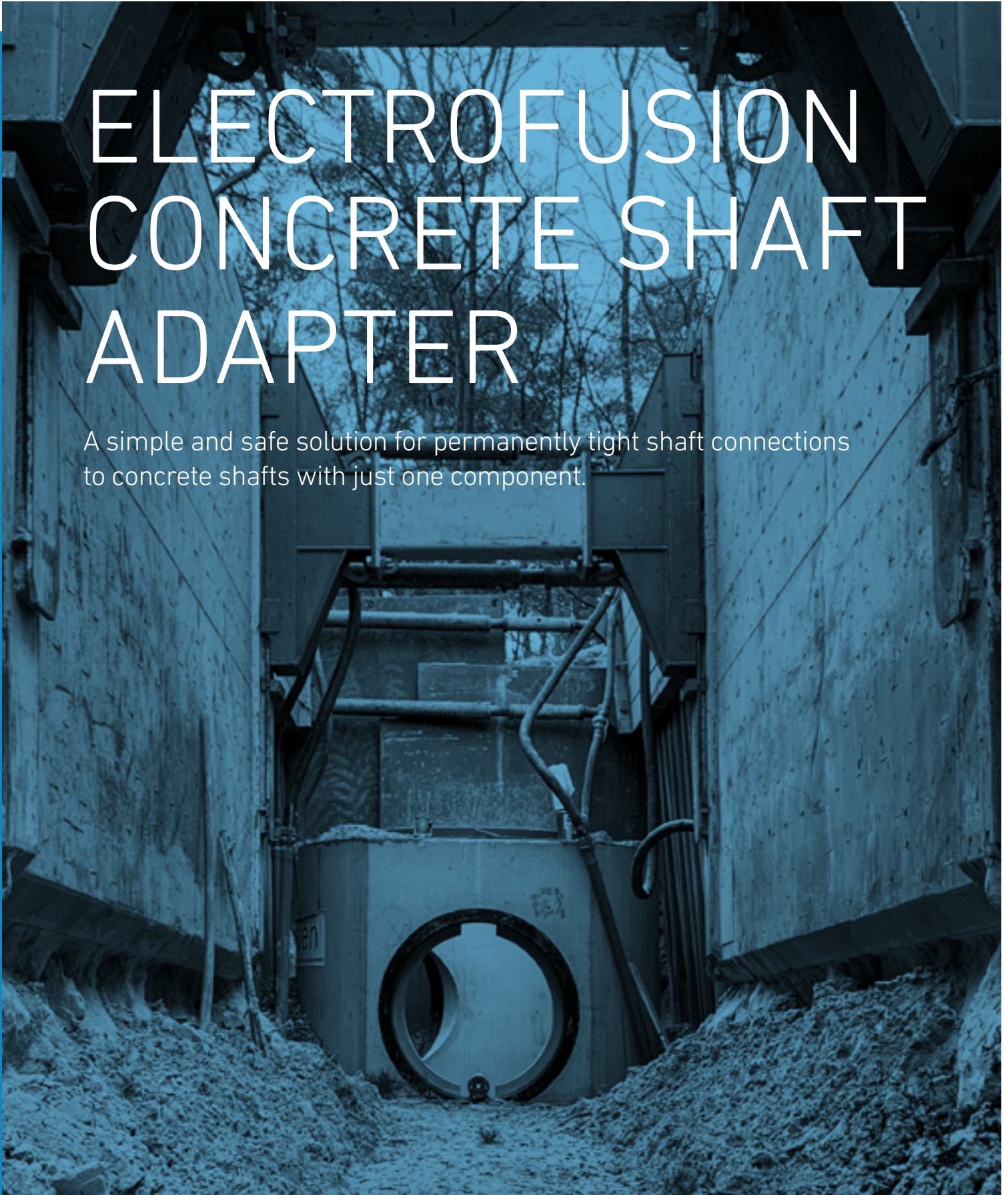


ELECTROFUSION CONCRETE SHAFT ADAPTER

A simple and safe solution for permanently tight shaft connections to concrete shafts with just one component.





EF concrete shaft adapter

for permanently leakproof shaft connections

As a result of their special component geometry, STAR EF concrete shaft adapters comply with the required angular deflection of $\pm 3^\circ$ and consequently withstand the varying subsidence behaviors between shaft and pipe without any problem.

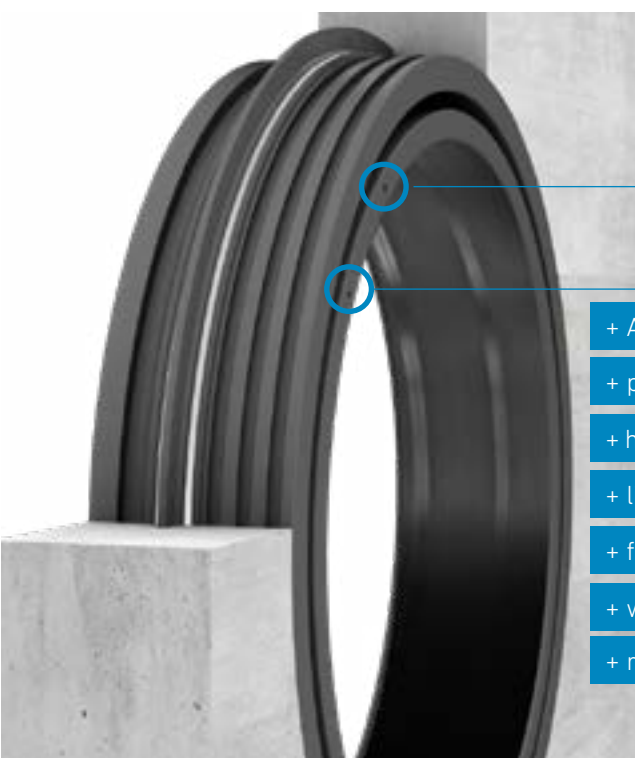
A fully welded coupling is established thanks to the design including electro fusion heating coils. Apart from the backed off anchoring bars for a firm fit, the additionally mounted EPDM collar seal produces an excellent impermeability.

Connections to concrete shafts acc. to DIN 4034-1

The EF concrete shaft adapter is usually firmly cast into the shaft by the concrete poured into it. On the installation site the pipeline can be slid directly in into the EF concrete shaft adapter and be firmly welded without the need of any further component.

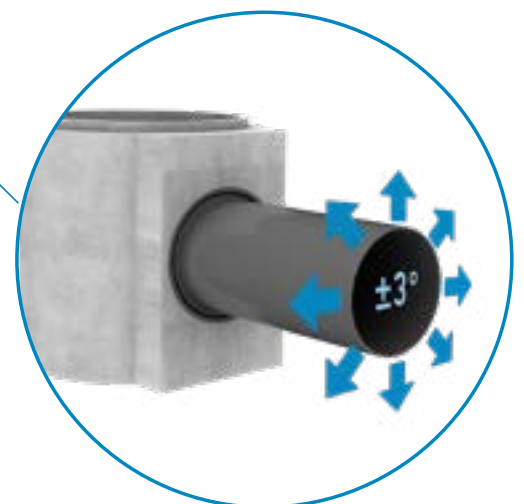
Barcode for fully automated welding

The welding can be done comfortably with any universal electro fusion welding machine thanks to the integrated heating coils. The necessary welding parameters can be input by digital reading of the barcode on the fitting.



universally weldable with frontal adapters

- + Angular compensation $\pm 3^\circ$
- + permanently leakproof
- + high tensile strength anchoring
- + lightweight
- + flush with formwork
- + with pipe stop
- + root resistant



Product range:



Material	PE100-RC
Dimensions	d 110 - 1000 mm others upon request
Overall length	L = 135 mm L = 250 mm bespoke lengths are possible
Products without angular compensation and/or pipe stop are available upon request.	



Product data base



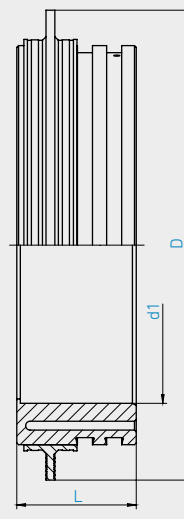
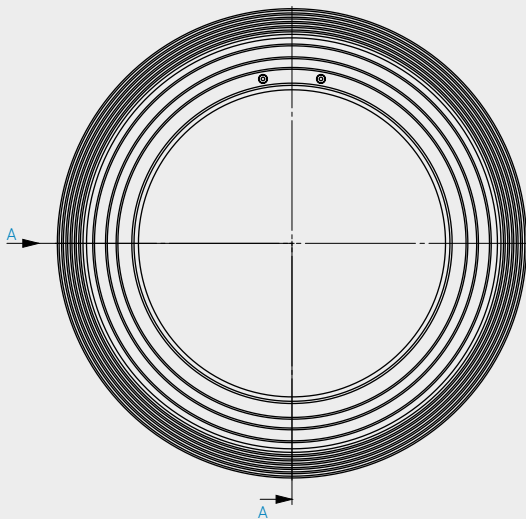
Product data base



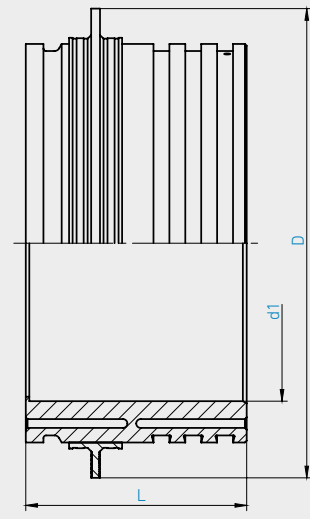
L = 135 mm



L = 250 mm



CUT A-A

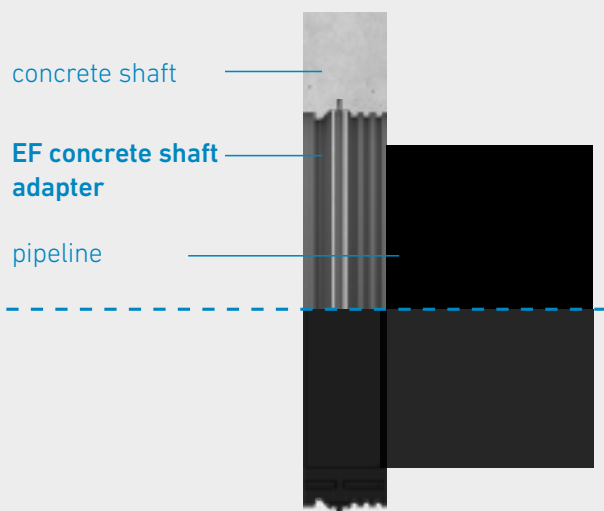


CUT A-A

Fast. Simple. Safe.

STAR EF concrete shaft adapters offer a simple and secure solution for the connection of pressureless PEHD sewage pipes to pre-fabricated chambers made of concrete.

And the best:
You only need one component!



time-saving



compact



flexible



cost-efficient

Solutions you trust

THAT'S WHY STAR PIPING SYSTEMS

+ Personal advisory service

+ In-house engineering

+ Provision of planning data

+ Custom components and prefabrication

+ Comprehensive product portfolio

+ Dimensions up to d 2500 mm

+ Product expertise and technology



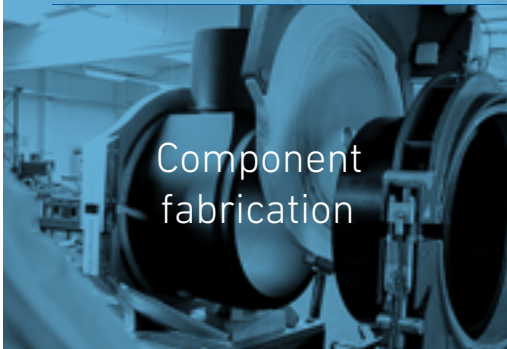
Material
testing



Extrusion
technology



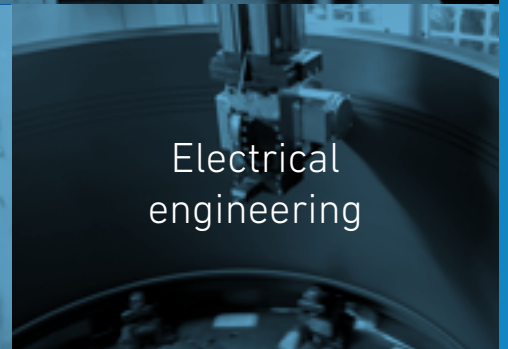
Cutting
department



Component
fabrication



Machining
technology



Electrical
engineering

STAR Piping Systems GmbH
Am Schornacker 90
46485 Wesel, Germany

www.star.de.com
info@star.de.com
+49281 98414-0

@starpipingsystems



05/2025